



INSTALLATION INSTRUCTIONS IF YOU HAVE SILENCE ON HOLD

Locate your phone system CPU

It's normally in a utility closet or other space within your office. Your phone system will probably look something like the one in **Figure A**.

Locate Music On Hold (MOH) Port On Phone System CPU

Your phone system may have a cover over the cabinet that is attached by screws. Simply loosen the screws and lift off the cover (see **Figure E**). Look inside and locate a plug input that may be marked "MOH" or "Music on Hold" (see **Figure F**). If your phone system is up high, you may need to stand on a stool to look inside completely.

Unpack the box

Your IntelliSound Digital On Hold Announcer will come with an AC power adapter, 2 patch cables, and a CD. In the package with the patch cables are two mounting screws. You will only need one of the patch cables.

Plug audio into announcer and into MOH Port

Depending on the type of MOH Port, you will use either the Mini to RCA Patch cable or the RCA to RCA Patch cable. Plug one end into the phone system (see **Figure F**) and plug the RCA end into either the 8 Ohm or 600 Ohm output. (see **Figure D**)

Power up your Announcer

Plug in the AC adaptor power cord into the 12 VDC input jack at the side of the unit. Plug the larger, power supply end of the adaptor into a grounded AC power outlet near the phone system.

Load the CD program

Insert the CD that came with your package so that the label is up. The CD will download onto a chip. It will take 6 minutes to load the CD. You can press the speaker button on the front of the unit to hear the program load if you like.

Check Volume

If your program has finished loading, call your main line from an outside phone line like a cell phone or a phone in another office and ask to be placed on hold (see **Figure G**). If your system has been installed correctly, you should hear IntelliSound's music on hold program playing. Adjust accordingly. If the volume is too faint try the other output on the announcer.

Mount the Announcer

Using the Wood Screws provided mount the announcer in a convenient place. (see **Figure H**)

Indicator Lights (LED):

An indicator light on the CDL 3800 blinks following power-up of the device.
1) The light blinks red while erasing the flash memory
2) blinks orange while recording into memory and
3) blinks green while playing the production selected. The light is off if no audio production is loaded into memory.

Call IntelliSound at 828-210-9000 for Technical Support

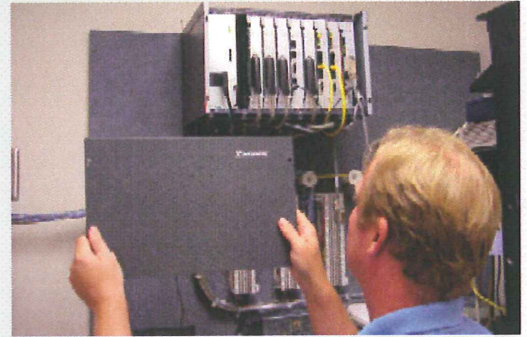


Figure E

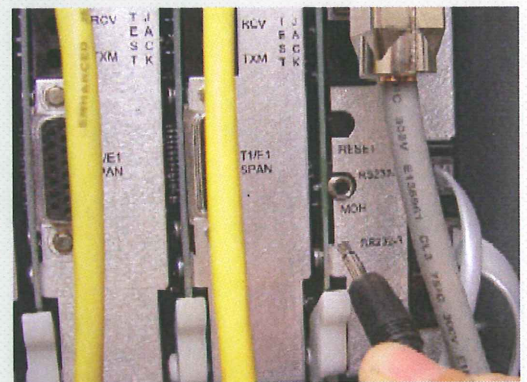


Figure F

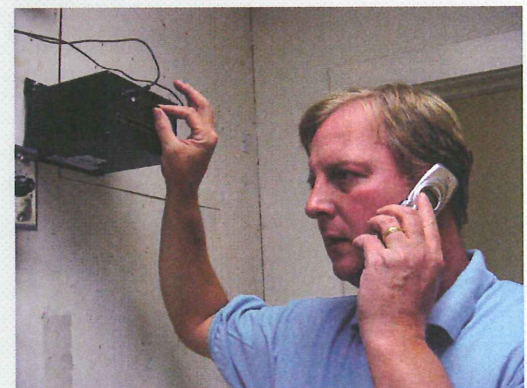


Figure G

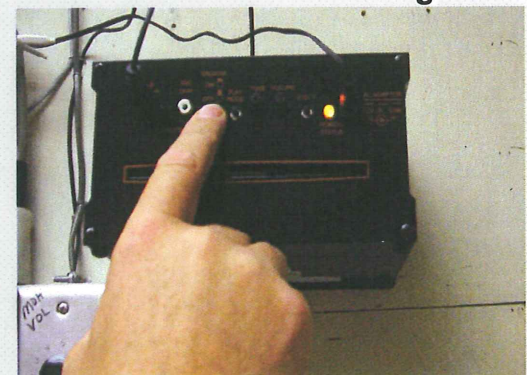


Figure H



INSTALLATION INSTRUCTIONS IF YOU HAVE A CD PLAYER OR RADIO

Locate your phone system CPU

It's normally in a utility closet or other space within your office. Your phone system will probably look something like the one in **Figure A**.

Locate Music On Hold Port On Phone System CPU

If you already have a radio or CD Player, you can use the existing cord that plugs into the ear plug jack of the CD Player or Radio. (see **Figure B**.)

Unpack the box

Your IntelliSound Digital On Hold Announcer will come with an AC power adapter, 2 patch cables, and a CD. In the package with the patch cables are two mounting screws. There will also be 2 small audio adapters. You probably won't need the patch cables.

Power up your Announcer

Plug in the AC adaptor power cord into the 12 VDC input jack at the side of the unit. Plug the larger, power supply end of the adaptor into a grounded AC power outlet near the phone system.

Load the CD program

Insert the CD that came with your package so that the label is up. The CD will download onto a chip. It will take 6 minutes to load the CD. You can press the speaker button on the front of the unit to hear the program load if you like.

Unplug the audio cord from your old music source

Take the appropriate adapter from Radio Shack and fit it onto the audio cord. (see **Figure C**) Plug in the adapted audio cord into either the 8 Ohm or 600 Ohm output. (see **Figure D**)

Check Volume

If your program has finished loading, call your main line from an outside phone line like a cell phone or a phone in another office and ask to be placed on hold (see **Figure G**). If your system has been installed correctly, you should hear IntelliSound's music on hold program playing. Adjust accordingly. If the volume is too faint try the other output on the announcer.

Mount the Announcer

Using the Wood Screws provided mount the announcer in a convenient place. (see **Figure H**)

Indicator Lights (LED):

An indicator light on the CDL 3800 blinks following power-up of the device.
1)The light blinks red while erasing the flash memory
2)blinks orange while recording into memory and
3) blinks green while playing the production selected. The light is off if no audio production is loaded into memory.

Call IntelliSound at 828-210-9000 for Technical Support

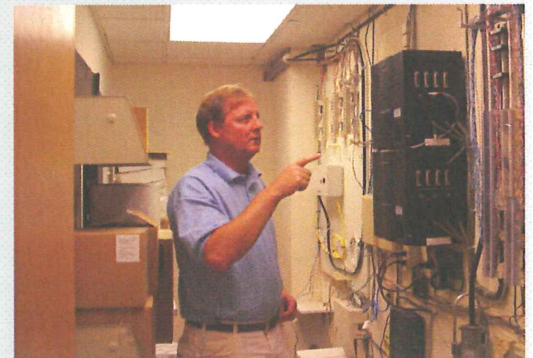


Figure A



Figure B



Figure C



Figure D